

# Spare Parts

## DC MAXI FLEX

80100

**Dancutter a/s**

Livøvej 1  
DK-8800 Viborg

Tel: +45 9651 2150  
info@dancutter.dk

CVR/VAT no.: 26672678

**Support**

Oplever du problemer med cutteren, eller har du bare tekniske spørgsmål så skriv til: **support@dancutter.dk**

**Order**

Mangler du reservedele eller skærekegler, så skriv til:  
**order@dancutter.dk**

**Support**

Bitte schreiben Sie an **support@dancutter.dk**, falls Sie Probleme mit dem Fräser oder technische Fragen haben.

**Bestellungen**

Bitte schreiben Sie an **order@dancutter.dk**, falls Sie Ersatzteile oder Fräsköpfe benötigen.

**Technical support**

If you experience problems with the cutter or if you have any technical questions, please write to **support@dancutter.dk**

**Order**

If you need spare parts or cutting heads, please write to  
**order@dancutter.dk**

## Indhold - Inhalt - Contents

### Cutter - Fräser - Cutter

080210 Cutter - Fräser - Cutter.....	s. 4
080219 Komplet forende - Komplettes Vorderes Ende - Complete front end.....	s. 6
080227 Komplet vippeled - Komplet Kippgelenk - Tilt joint, complete.....	s. 8
080240 Komplet sluse - Komplette schleuse - Complete swivel .....	s. 10
080241 Slusedel - Schleuseteil - Swivel component .....	s. 12
080270 Komplet fremtræk - Komplettes Vorwärts - Complete forwards.....	s. 14
080273 Fremtræk - Vorwärts - Forwards .....	s. 16
080277 Fremtræk - Vorwärts - Forwards .....	s. 18
080281 Fremtræk - Vorwärts - Forwards .....	s. 20
080451 Kobling - Kabelsatz - Wiring.....	s. 22

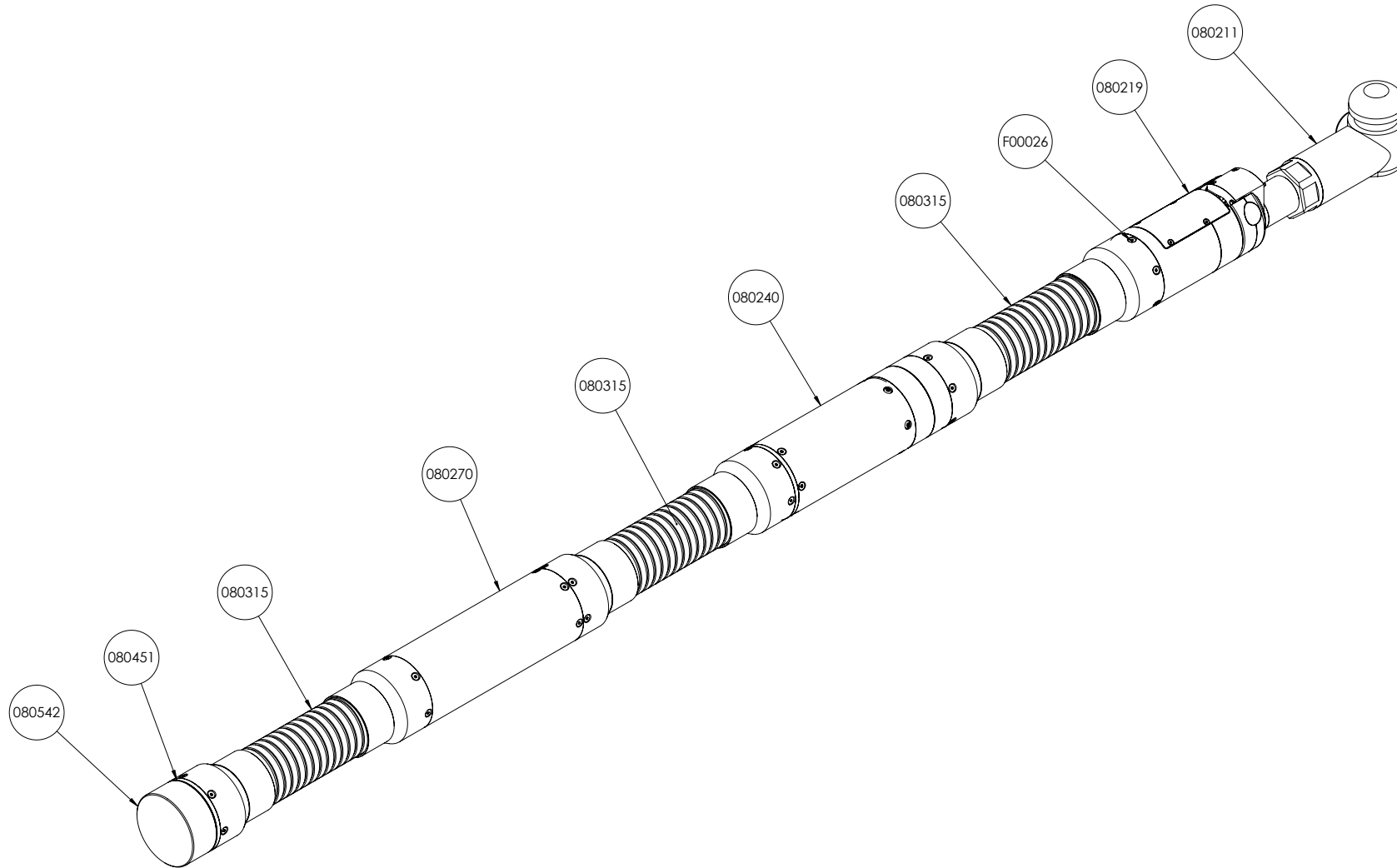
### Toolbox

080541 Toolbox Standard .....	s. 24
080540 Toolbox Gold Upgrade.....	s. 26

080210  
Cutter  
Fräser  
Cutter



December 2020  
080100 >

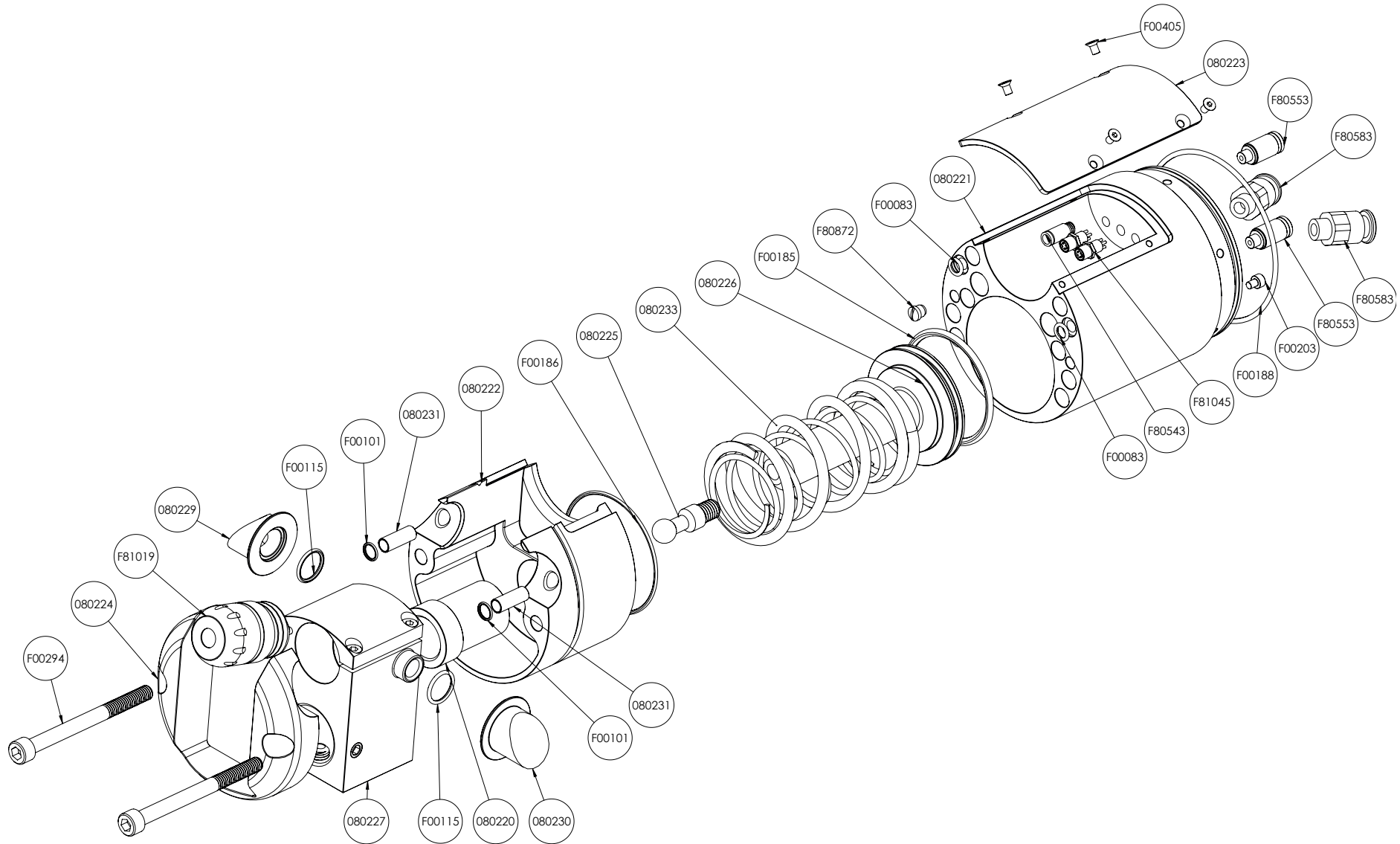





DC nr.				QTY
080211	UAG50 Luftmotor	UAG50 Luftmotor	UAG50 Air motor	1
080219	Komplet forende	Komplettes Vorderes Ende	Complete front end	1
080240	Komplet sluse cutter	Komplette Schleuse Fräser	Complete swivel cutter	1
080270	Komplet fremtræk	Kompletter Vorschub	Complete forward drive	1
080315	Komplet mellem slange	Kompletter Zwischenschlauch	Complete intermediate hose	3
080451	Komplet kobling cutter	Kupplung Fräser	Coupling cutter	1
080542	Beskyttelses hætte cutter	Schutzhaube Fräser	Protective casing , cutter	1
F00026	Skrue M 4 x 6 US	Schrauben M 4 x 6 US	Screw M 4 x 6 US	36

080219  
Forende  
Vorderes Ende  
Front end



December 2020  
080100 >

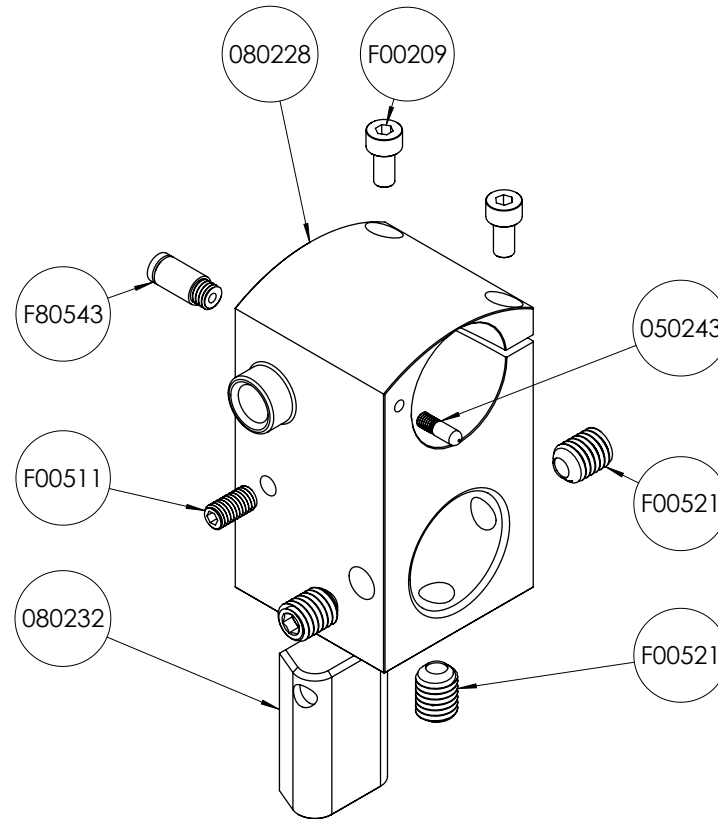


DC nr.				QTY
080220	Bøsning til stempel	Buchse für Kolben	Piston bushing	1
080221	Cylinder	Zylinder	Cylinder	1
080222	Cylinder top	Zylinderkopf	Cylinder, top	1
080223	Dæksel	Schutzkappe	Cover	1
080224	Overfald	Schließband	Bearing top section	1
080225	Kugleled	Kugelgelenk	Ball joint	1
080226	Stempel	Kolben	Piston	1
080227	Vippeled komplet	Komplett Kippgelenk	Complete swivel support	1
080229	Vippeledsbøsning H	Kippgelenksbuchse R	Swivel support, bushing, R	1
080230	Vippeledsbøsning V	Kippgelenksbuchse L	Swivel support, bushing, L	1
080231	Centreringsrør	Zentrierrohr	Ring adapter	2
080233	Dobbelt fjeder	Doppelt Druckfeder	Double spring	1
F81019	Kamera Ø 25 mm	Kamera DN 25 mm	Camera, Ø 25 mm	1
F00083	O-ring 5 x 1,5 mm	O-ring 5 x 1,5 mm	O-ring 5 x 1,5 mm	2
F00101	O-ring 6 x 1 mm	O-ring 6 x 1 mm	O-ring 6 x 1 mm	2
F00185	O-ring 44 x 3 mm	O-ring 44 x 3 mm	O-ring 44 x 3 mm	1
F00186	O-ring 50 x 1,5 mm	O-ring 50 x 1,5 mm	O-ring 50 x 1,5 mm	1
F00188	O-ring 66 x 2 mm	O-ring 66 x 2 mm	O-ring 66 x 2 mm	1
F80543	Push-in M 5 Ø 3	Einschub M 5 DN 3	Push-in M 5 Ø 3	1
F80553	Push-in M5 Ø 4	Push-in M 5 DN 4	Push-in M 5 Ø 4	2
F80583	Push-in G 1/8 Ø 8	Push-in G 1/8 DN 8	Push-in G 1/8 Ø 8	2
F00115	O-ring 12 x 1,5 mm	O-ring 12 x 1,5 mm	O-ring 12 x 1,5 mm	2
F00203	Skrue M 3 x 4 CH	Schrauben M 3 x 4 CH	Screw M 3 x 4 CH	1
F00294	Skrue M 6 x 70 CH	Schrauben M 6 x 70 mm CH	Screw M 6 x 70 CH	2
F00405	Skrue M 3 x 5 US	Schrauben M 3 x 5 US	Screw M 3 x 5 US	4
F81045	Følbersokkel P 4 M 5	Kamera Stecker P 4 M 5	Sensor Socket P 4 M 5 female	2
F80872	Låseskrue M 5	Schrauben M 5	Lock screw M 5	1
080234	Kamerakabel	Kamerakabel	Camera Cable	1
080236	Ledningsnet	Kabelsatz	Wiring	1
F80083	Slange Ø 3 mm	Schlauch DN 3 mm	Hose Ø 3 mm	1

080227  
Vippeled komplet  
Komplett Kippgelenk  
Complete swivel support



December 2020  
080100 >



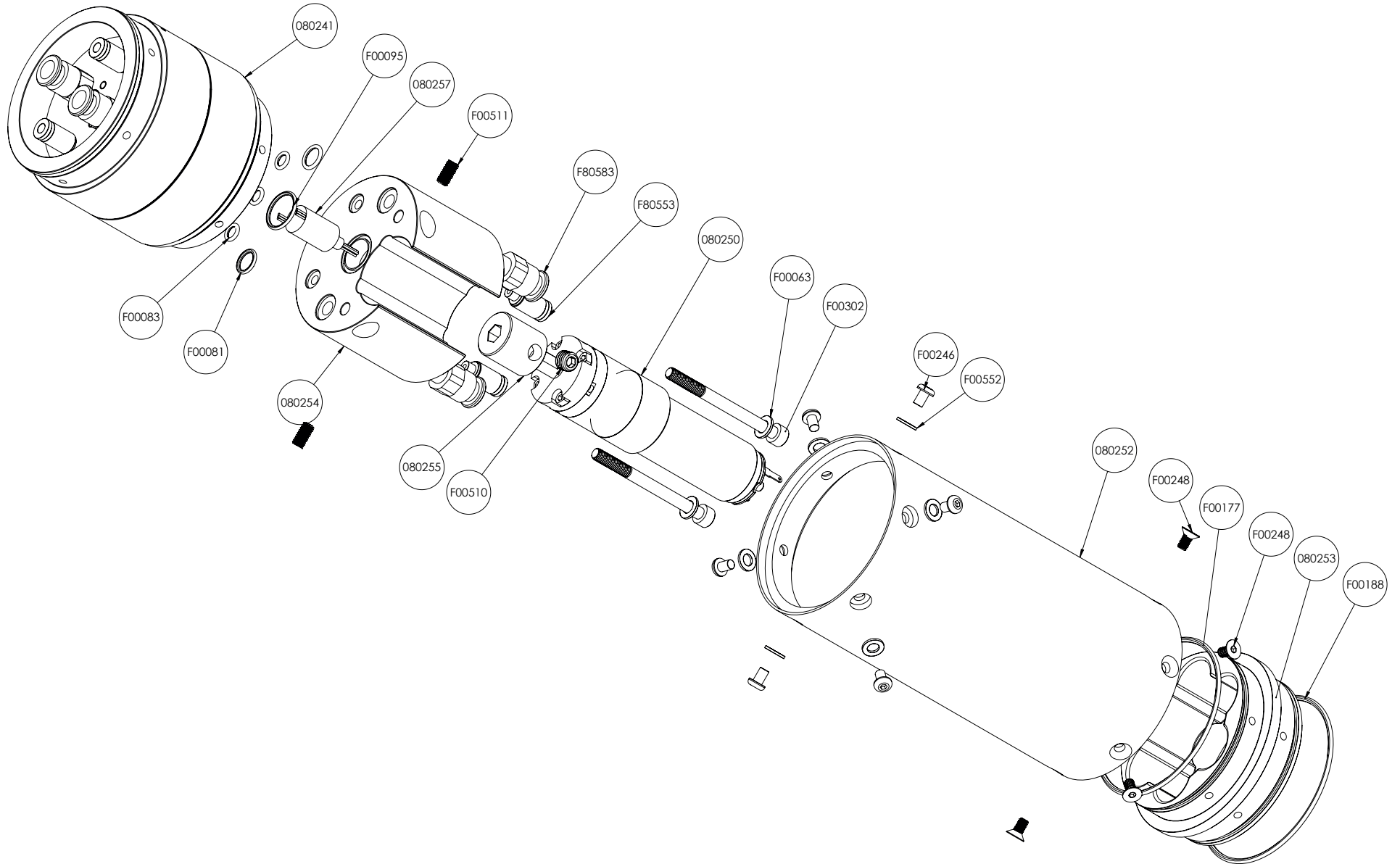


DC nr.				QTY
080228	Vippeled	Kippgelenk	Swivel support	1
080232	Vippeleds indsats	Kippgelenkeinsatz	Swivel support insert	1
050243	Sprinkler dyse	Sprinklerdüse	Sprinkler nozzle	1
F00209	Skrue M 4 x 8 CH	Schrauben M 4 x 8 CH	Screw M 4 x 8 CH	2
F00511	Pinolskrue M 5 x 10	Madenschrauben M 5 x 10	Set screw M 5 x 10	1
F00521	Pinolskrue M 8 x 10	Madenschrauben M 8 x 10	Set screw M 8 x 10	3
F80543	Push-in M 5 Ø 3	Push-in M 5 DN 3	Push-in M 5 Ø 3	1

080240  
Sluse  
Schleuse  
Swivel



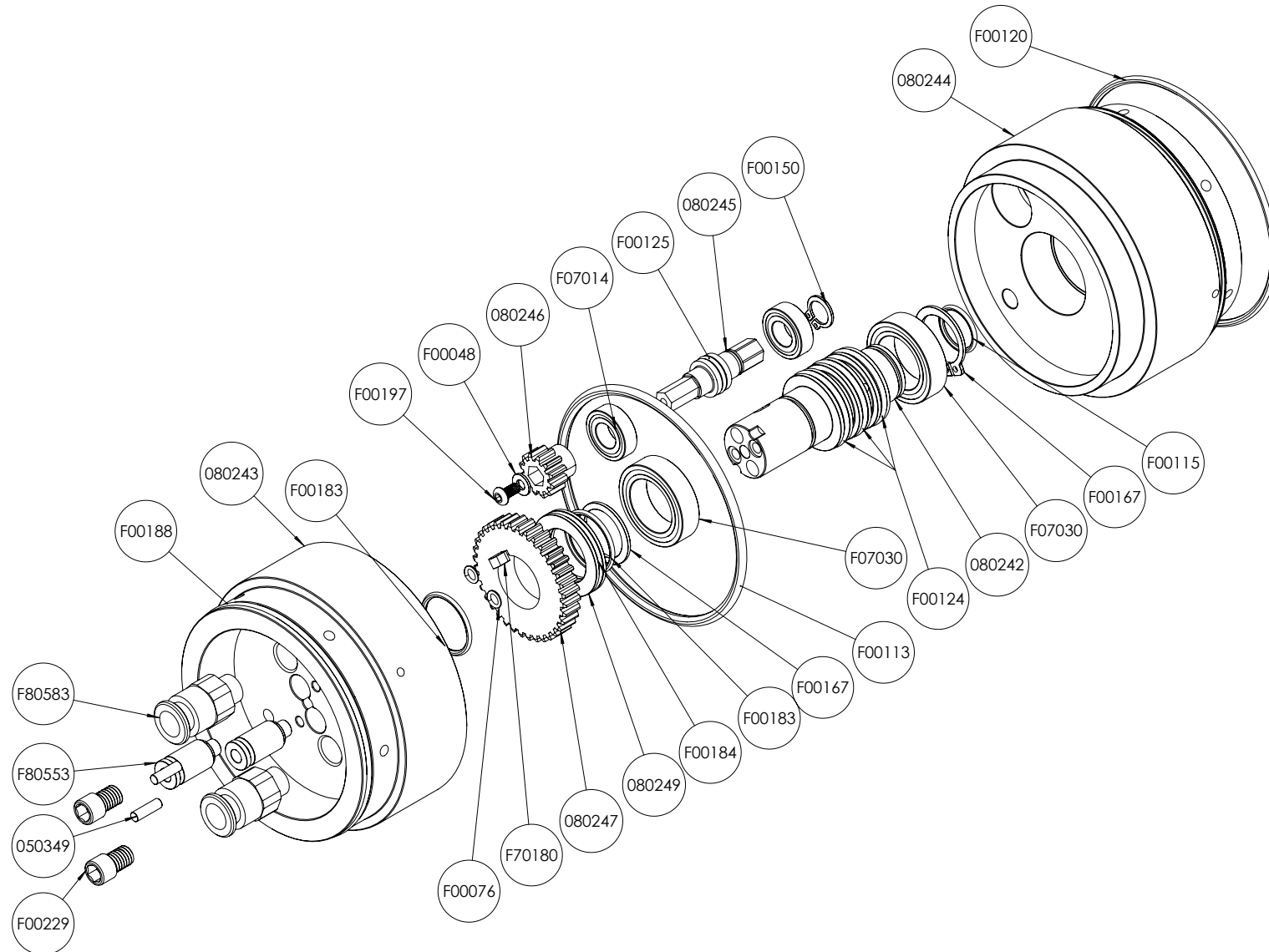
December 2020  
080100 >



DC nr.				QTY
080241	Slusedel samlet	Schleuse komplett	Swivel, complete	1
080250	Drejemotor Komplet	Drehantrieb komplett	Rotation motor, complete	1
080252	Motorhus	Motorgehäuse	Motor casing	1
080253	Mellemflange motorhus	Zwischenflansch Motorgehäuse	Intermediate flange, motor casing	1
080254	Motor-slæberingsholder	Motor-Schleifringhalter	Motor slip-ring holder	1
080255	Kobling	Kupplung	Coupling	1
F00081	O-ring 8 x 1,5 mm	O-ring 8 x 1,5 mm	O-ring 8 x 1,5 mm	2
F00083	O-ring 5 x 1,5 mm	O-ring 5 x 1,5 mm	O-ring 5 x 1,5 mm	3
F00095	O-ring 14 x 1,5 mm	O-ring 14 x 1,5 mm	O-ring 14 x 1,5 mm	1
F00177	O-ring 64 x 2 mm	O-ring 64 x 2 mm	O-ring 64 x 2 mm	1
F00188	O-ring 66 x 2 mm	O-ring 66 x 2 mm	O-ring 66 x 2 mm	1
F80553	Push-in M 5 Ø 4	Einschub M 5 Ø 4	Push-in M 5 Ø 4	2
F80583	Push-in G 1/8 Ø 8	Einschub G 1/8 DN 8	Push-in G 1/8 Ø 8	2
F00246	Skruer M 4 x 6 BH	Schrauben M 4 x 6 BH	Screw M 4 x 6 BH	6
F00248	Skruer M 4 x 8 US	Schrauben M 4 x 8 US	Screw M 4 x 8 US	6
F00302	Skruer M 5 x 60 CH	Schrauben M 5 x 60 CH	Screw M 5 x 60 CH	3
F00063	Spændeskive M 5	Beilagscheibe M 5	Lock washer M 5	3
F00510	Pinolskrue M 8 x 8 mm	Madenschrauben M 8 x 8 mm	Set screw M 8 x 8 mm	1
F00511	Pinolskrue M 5 x 10 mm	Madenschrauben M 5 x 10 mm	Set screw M 5 x 10 mm	2
F00552	Kobberring 5 x 9 x 1 mm	Kupfer Ring 5 x 9 x 1 mm	Copper ring 5 x 9 x 1 mm	6
080257	Slæbering	Schleifring	Slipring	1
080256	Ledningsnet sluse 1	Kabelsatz Schleuse 1	Wiring Sluice 1	1
080258	Ledningsnet sluse 3	Kabelsatz Schleuse 3	Wiring Sluice 3	1
F00146	Kabelclips 4,8 mm	Kabel Clips 4,8 mm	Cable clips 4,8 mm	1

080241  
Slusedel  
Schleuseteil  
Swivel component

December 2020  
080100 >

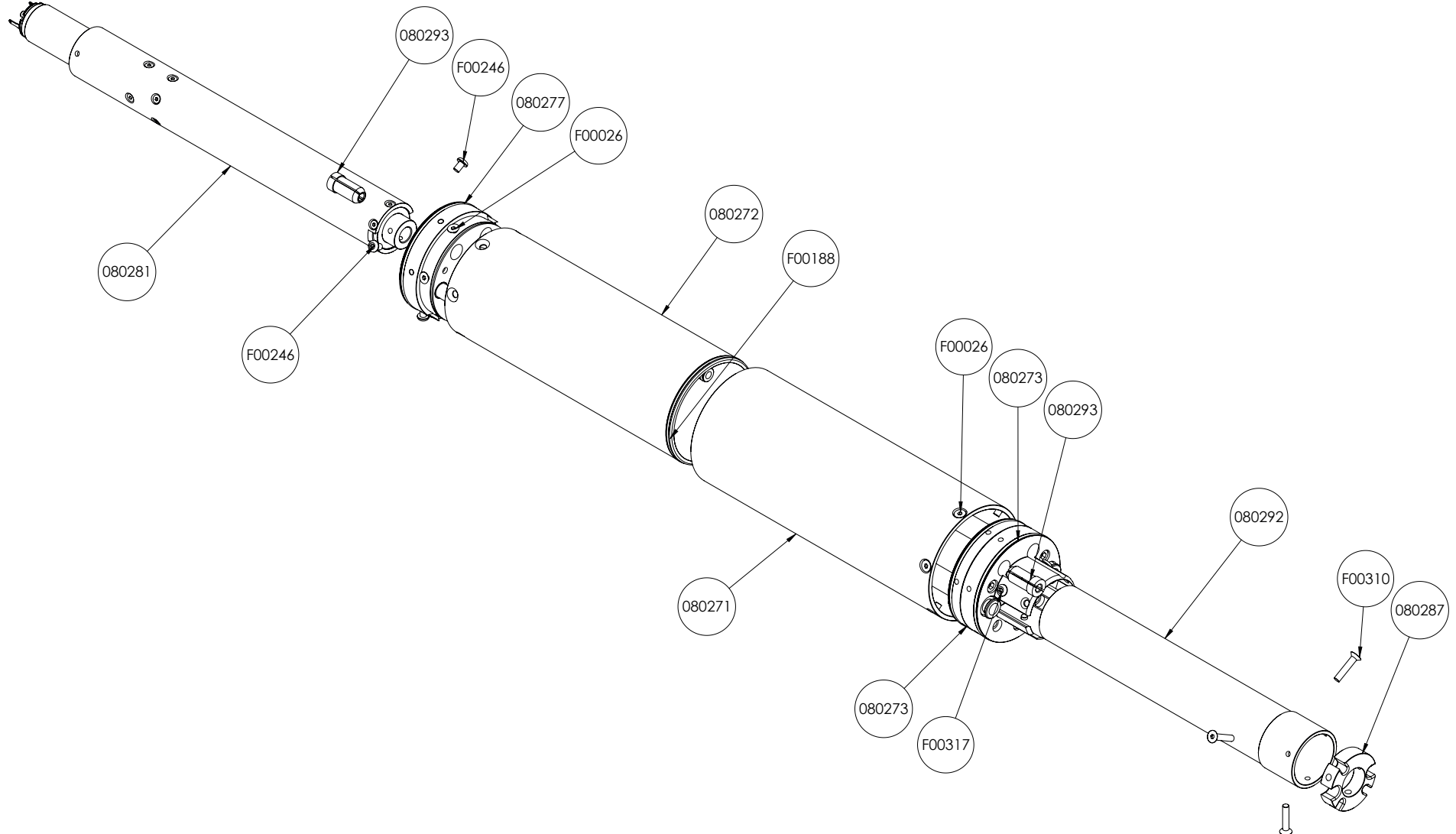


DC nr.				QTY
080242	Sluse roterende	Schleuse rotierend	Sluice, rotating	1
080243	Medbringer	Mitnehmer	Guide	1
080244	Sluse fast	Schleuse fest	Swivel, fixed	1
080245	Aksel drejemotor	Welle Drehantrieb	Shaft, rotation motor	1
080246	Tandhjul aksel	Zahnrad Welle	Gear wheel shaft	1
080247	Tandhjul sluse roterende	Zahnrad Schleuse rotierend	Gear wheel, sluice, rotating	1
080249	Tætningsring sluse roterende	Dichtungsring - Schleuse rot.	Seal ring, swivel, rotating	1
F00048	Spændeskive M 3	Beilagscheibe DN 3	Lock washer M 3	1
F00076	O-ring 3,5 x 1 mm	O-ring 3,5 x 1 mm	O-ring 3,5 x 1 mm	2
F00113	O-ring 70 x 3 mm	O-ring 70 x 3 mm	O-ring 70 x 3 mm	1
F00115	O-ring 12 x 1,5 mm	O-ring 12 x 1,5 mm	O-ring 12 x 1,5 mm	1
F00120	O-ring 70 x 2 mm	O-ring 70 x 2 mm	O-ring 70 x 2 mm	1
F00124	O-ring 19 x 2 mm	O-ring 19 x 2 mm	O-ring 19 x 2 mm	3
F00125	O-ring 9 x 1,5 mm	O-ring 9 x 1,5 mm	O-ring 9 x 1,5 mm	1
F00150	Låsering Ø 8 mm	Arretierungsring DN 8 mm	Retainer Lock 8 mm	1
F00183	O-ring 17 x 1,5 mm	O-ring 17 x 1,5 mm	O-ring 17 x 1,5 mm	2
F00184	O-ring 23 x 1,5 mm	O-ring 23 x 1,5 mm	O-ring 23 x 1,5 mm	1
F00188	O-ring 66 x 2 mm	O-ring 66 x 2 mm	O-ring 66 x 2 mm	1
F00197	Skruer M 3 x 6 BH	Schrauben M 3 x 6 BH	Screw M 3 x 6 BH	1
F00229	Skruer M 6 x 8 (nedd. Ø 7,7)	Schrauben M 6 x 8 (heruntergedr. DN 7,7)	Screw M 6 x 8 (turned down to Ø 7,7)	2
F07014	Leje 628/8 2 rs	Kugellager 628/8 2 rs	Bush 628/8 2 rs	2
F07030	Leje 3803 zz	Kugellager 3803 zz	Bush 3803 zz	2
F70180	Pasfeder 3 x 3 x 6 mm	Passfeder 3 x 3 x 6 mm	Feather key, 3 x 3 x 6 mm	1
F80553	Push-in M 5 Ø 4	Einschub M 5 DN 4	Push-in M 5 Ø 4	2
F80583	Push-in fitting G 1/8" Ø 8	Steckanschluss G 1/8" DN 8	Push-in fitting G 1/8" Ø 8	2
050349	Styrestift Ø 3 mm	Führungsstifte DN 3 mm	Guide pin Ø 3 mm	2
F00167	Låsering Ø 17 mm	Arretierungsring DN 17 mm	Retainer Lock Ø 17 mm	2

080270  
Fremtræk  
Vorschub  
Forward drive



December 2020  
080100 >



DC nr.				QTY
080271	Udvendig svøb	Außenhülle	Outer casing	1
080272	Indvendig svøb	Innenhülle	Inner casing	1
080273	Fremtræk udvendig	Vorschub außen	Forward drive, external	1
080277	Fremtræk indvendig	Vorschub innen	Forward drive, internal	1
080281	Fremtræk motordel	Vorschub Motorteil	Forward drive, motor component	1
080287	Sammenkoblingsring	Anschlussring	Connecting ring	1
080292	Yderrør motordel	Außenrohr Motorteil	Outside tube motor component	1
080293	Kabellås	Kabelhalter	Cable clamp	2
080294	Ledningsnet fremtræk	Kabelsatz, vorschub	Wiring, forward drive	1
F00026	Skrue M 4 x 6 US	Schrauben M 4 x 6 US	Screw M 4 x 6 US	12
F00188	O-ring 66 x 2 mm	O-ring 66 x 2 mm	O-ring 66 x 2 mm	1
F00246	Skrue M 4 x 6 BH	Schrauben M 4 x 6 BH	Screw M 4 x 6 BH	3
F00310	Skrue M 4 x 20 US	Schrauben M 4 x 20 US	Screw M 4 x 20 US	3
F00317	Skrue M 4 x 4 BH	Schrauben M 4 x 4 BH	Screw M 4 x 4 BH	3

080273

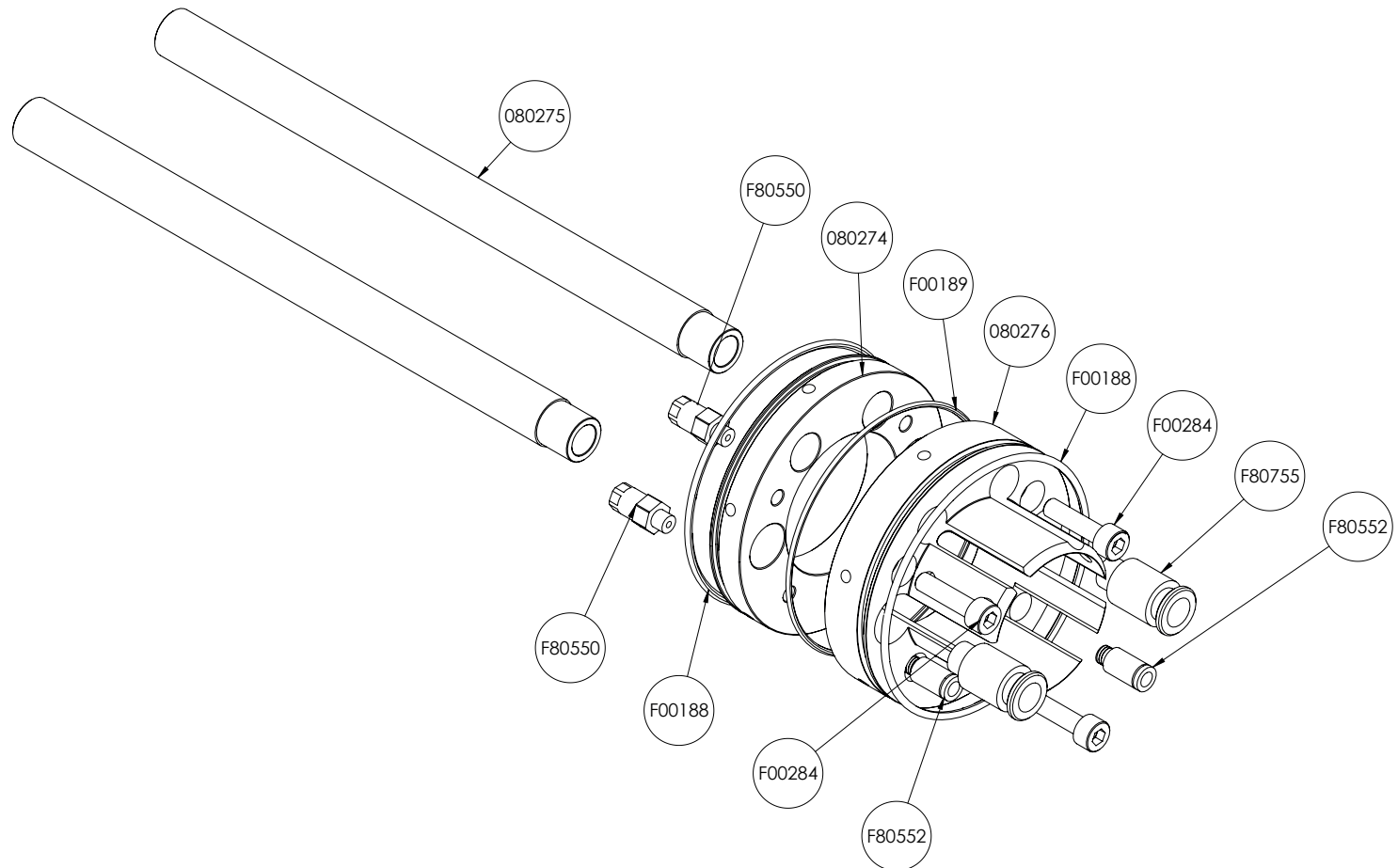
Fremtræk udvendig

Vorschub außen

Forward drive, EXT.



December 2020  
080100 >





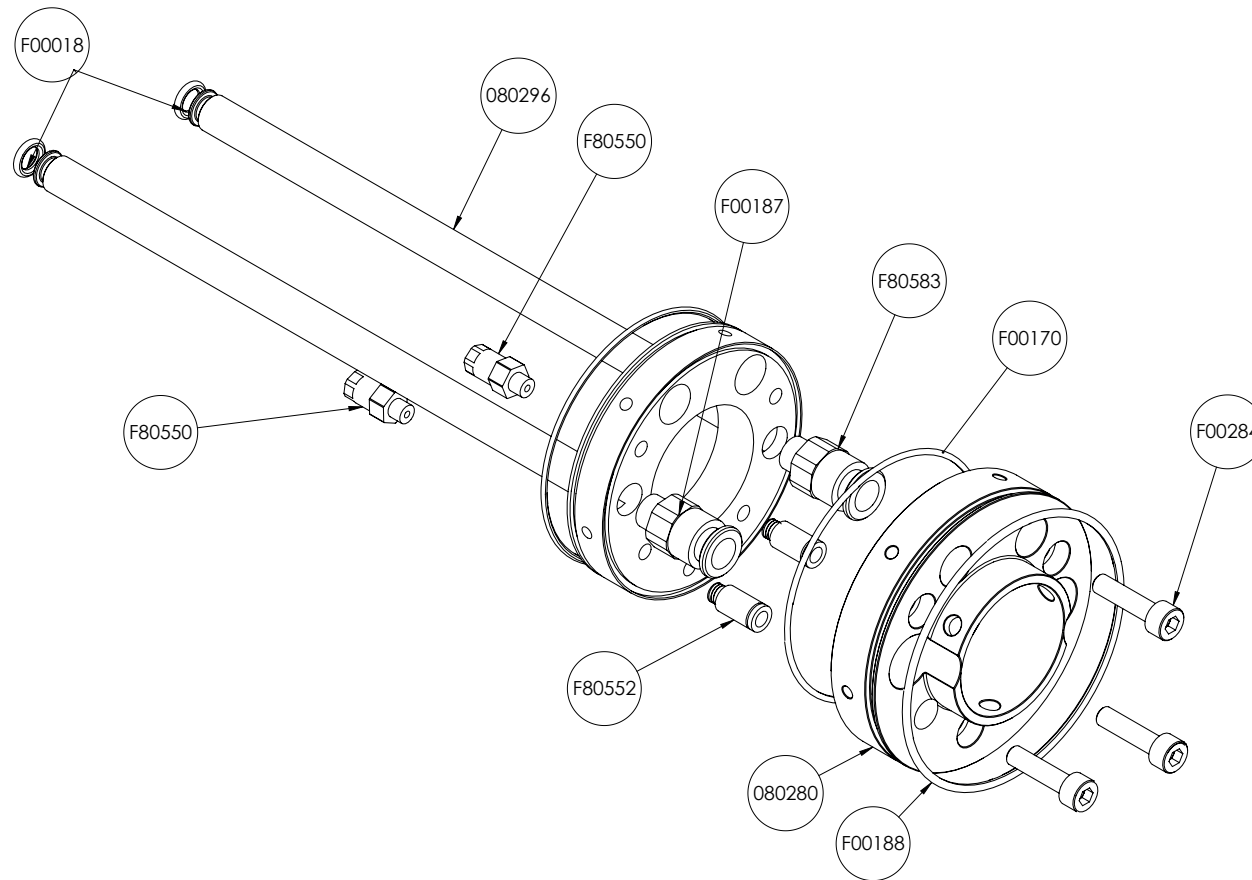
DC nr.				QTY
080274	Endebund Ø 74 mm	Boden DN 74 mm	End plate Ø 74 mm	1
080275	Udvendig udskyderør	Äußeres Ausstoßrohr	Ejector tube, external	2
080276	Mellemflange, for	Zwischenflansch vorne	Intermediate flange, front	1
F00188	O-ring 66 x 2 mm	O-ring 66 x 2 mm	O-ring 66 x 2 mm	2
F00189	O-ring 68,5 x 1,5 mm	O-ring 68,5 x 1,5 mm	O-ring 68,5 x 1,5 mm	1
F00284	Skrue M 5 x 20 CH	Schrauben M 5 x 20 CH	Screw M 5 x 20 CH	3
F80550	Push-on fitting Ø 4 x M 5	Steckanschluss DN 4 M 5	Push-on fitting M 5 Ø 4	2
F80552	Push-in fitting Ø 4 M 5	Steckanschluss DN 4 M 5	Push-in fitting Ø 4 M 5	2
F80755	Push-in fitting Ø 8 x 1/8" Neddrejet Ø 13 mm	Steckanschluss DN 8 x 1/8" gedreht DN 13 mm	Push-in fitting Ø 8 x 1/8" turned Ø 13 mm	2




080277

Fremtræk indvendig  
Vorschub  
Forward drive,



December 2020  
080100 >

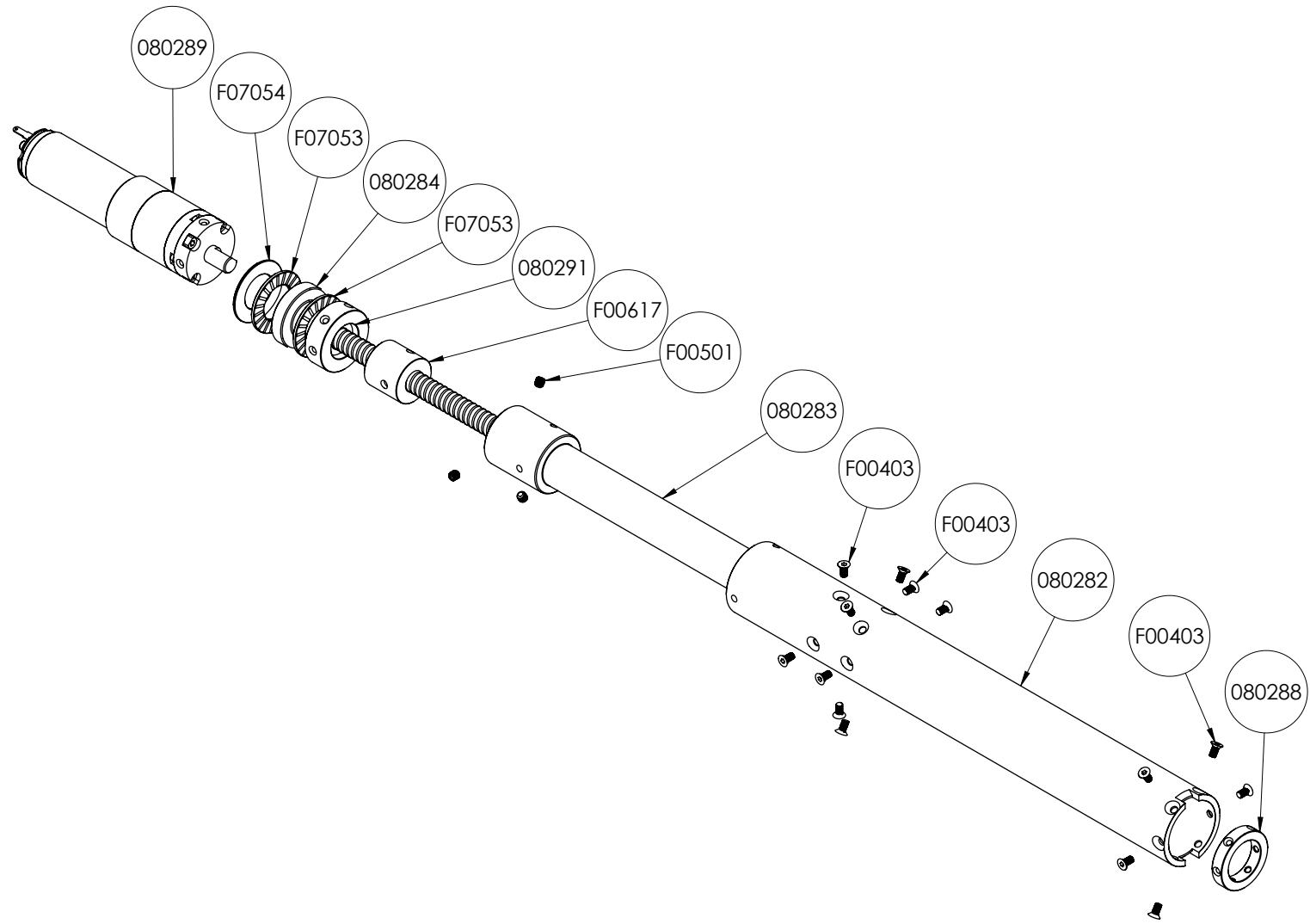


DC nr.				QTY
080296	Inderste udskyderør med flange	Innen ragt Rohr mit Flansch heraus	Inner protrudes pipe with flange	1
080280	Mellemlange bag	Zwischenflansch hinten	Intermediate flange, rear	1
F00018	O-ring 6 x 2 mm	O-ring 6 x 2 mm	O-ring 6 x 2 mm	2
F00170	O-ring 63,8 x 1,5 mm	O-ring 63,8 x 1,5 mm	O-ring 63,8 x 1,5 mm	1
F00187	O-ring 63,5 x 1,5 mm	O-ring 63,5 x 1,5 mm	O-ring 63,5 x 1,5 mm	1
F00188	O-ring 66 x 2 mm	O-ring 66 x 2 mm	O-ring 66 x 2 mm	1
F00284	Skrue M 5 x 20 CH	Schrauben M 5 x 20 CH	Screw M 5 x 20 CH	3
F80550	Push-on fitting M 5 Ø 4	Steckanschluss M 5 DN 4	Push-on fitting M 5 Ø 4	2
F80552	Push-in fitting M 5 Ø 4	Steckanschluss M 5 DN 4	Push-in fitting M 5 Ø 4	2
F80583	Push-in fitting G 1/8" Ø 8	Steckanschluss G 1/8" DN 8	Push-in fitting G 1/8" DN 8	2

080281  
Fremtræk motordel  
Motorteil  
motor component



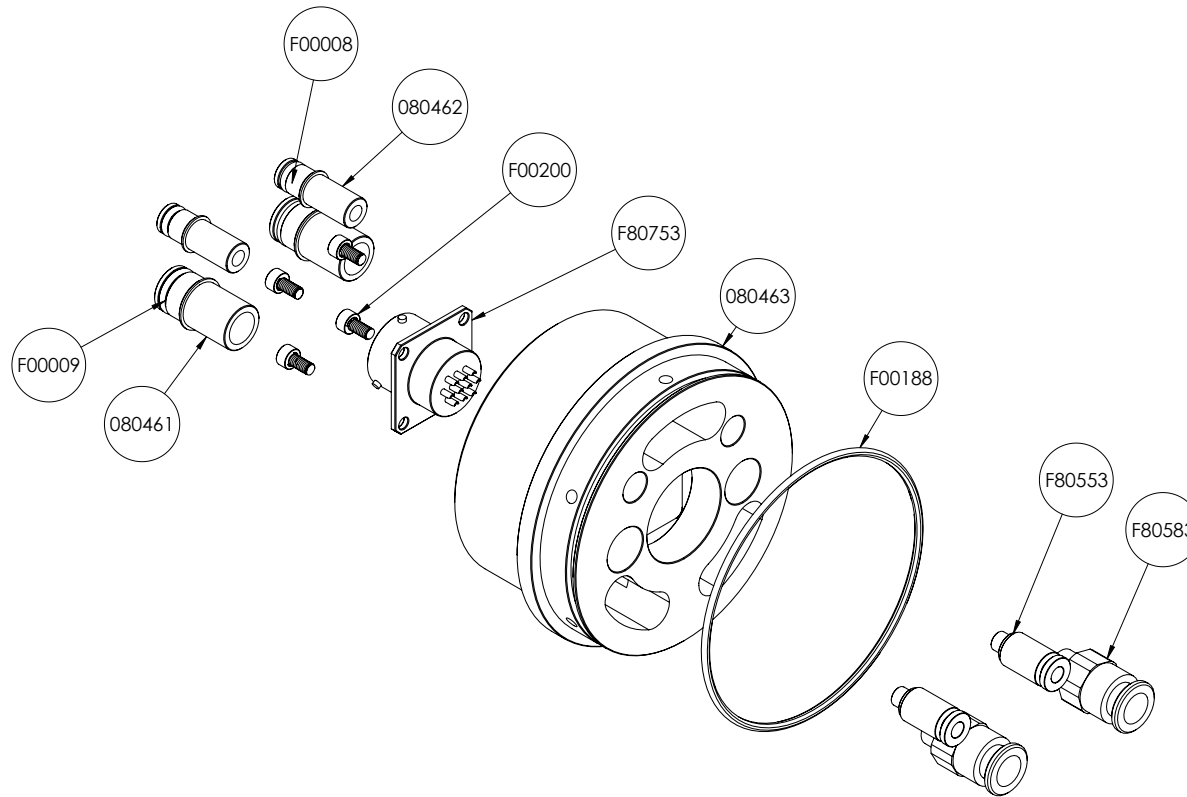
December 2020  
080100 >



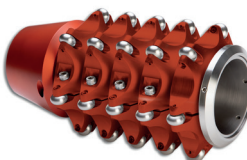



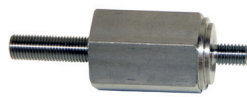











DC nr.				QTY
080282	Inderrør mortordel	Innenrohr Motorteil	Inner tube, motor component	1
080283	Udskubberrør	Ausschubrohr	Ejector tube	1
080284	Gevindspindel Komplet	Gevindspindel Komplett	Thread spindle complete	1
080288	Stop ring	Stopring	Stop ring	1
080289	Fremstræk motor komplet	Vorschubmotor Komplett	Forward drive motor, complete	1
080291	Klemmeendebøsning	Klemmenendbuchse	Terminal end bushing	1
F00403	Skrue M 3 x 6 US	Schrauben M 3 x 6 US	Screw M 3 x 6 US	16
F00501	Pinolskrue M 4 x 4	Madenschrauben M 4 x 4 mm	Set screw M 4 x 4 mm	3
F00617	Møtrik TR 10 x 3 Ø 22 x 20 mm	Mutter TR 10 x 3 DN 22 x 20 mm	Nut TR 10 x 3 Ø 22 x 20 mm	1
F07053	Aksial nåleleje LS1730	Axial Nadellager LS1730	Axial Needle Bearing LS1730	2
F07054	Trykskive	Flachscheibe für Nadellager	Flat disc for needle bearing	1

080451  
Kobling  
Kabelsatz  
Wiring

December 2020  
080100 >



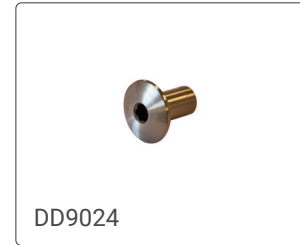
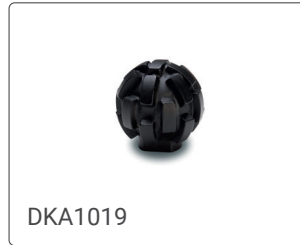
DC nr.				QTY
080461	Stift slibeluft	Stift Schleifluft	Pin, grinding air	2
080462	Stift arm-clean	Stift Arm-Clean	Pin arm, clean	2
080463	Hanstik	Stecker	Male plug	1
080464	Ledningsnet kobling cutter	Kabelsatz, kupplung fräser	Wiring, coupling cutter	1
F00008	O-ring 4 x 2 mm	O-ring 4 x 2 mm	O-ring 4 x 2 mm	2
F00009	O-ring 8 x 2 mm	O-ring 8 x 2 mm	O-ring 8 x 2 mm	2
F00188	O-ring 66 x 2 mm	O-ring 66 x 2 mm	O-ring 66 x 2 mm	1
F00200	Skrue M3 x 6 CH	Schrauben M 3 x 6 CH	Screw M 3 x 6 CH	4
F80553	Push-in fitting Ø 4 M 5	Steckanschluss DN 4 M 5	Push-in fitting Ø 4 M 5	2
F80583	Push-in fitting G 1/8" Ø 8	Steckanschluss G 1/8" DN 8	Push-in fitting G 1/8" Ø 8	2
F80753	Sokkel Han 10 POL	Sockel Stecker 10-pol	Plug, male, 10 pole	1

 <p>080550</p>	 <p>080551</p>	 <p>F00039</p>	 <p>F00040</p>	 <p>F00041</p>
 <p>F00070</p>	 <p>F00071</p>	 <p>F00100</p>	 <p>F00118</p>	 <p>F00516</p>
 <p>F85001</p>	 <p>F85004-1</p>	 <p>F85007</p>	 <p>F85027</p>	<p>Indsats - Einlage - Insert</p> <p>F85029</p>
 <p>F85030</p>	 <p>DCHY 29306</p>			





DC nr.				QTY.
080550	Centreringsæt m/hjul	Zentriersatz M/rad	Centring tool w/wheels	1
080551	Forlænger	Verlängerung	Extension	1
F00039	Adaptorbolt 27 x 33,5 M 8	Adaptorbolt 27 x 33,5 M 8	Adaptorbolt 27 x 33,5 M 8	1
F00040	Adaptorbolt 27 x 54 M 8	Adaptorbolt 27 x 54 M 8	Adaptorbolt 27 x 54 M 8	1
F00041	Adaptorbolt 27 x 85 M 8	Adaptorbolt 27 x 85 M 8	Adaptorbolt 27 x 85 M 8	1
F00070	Spændeskive Ø 10 mm	Beilagscheibe DN 10 mm	Washer, Ø 10 mm	4
F00071	Møtrik 3/8 UNF	Mutter 3/8 UNF	Nut, 3/8 UNF	2
F00100	Fjederskive Ø 10 mm	Spannscheibe DN 10 mm	Elastic washer, Ø 10 mm	4
F00118	O-ring 19 x 3 mm	O-ring 19 x 3 mm	O-ring 19 x 3 mm	1
F00516	Pinolskrue M 8 x 12	Madenschraube M 8 x 12	Pointed screw M 8 x 12	3
F85001	Fedt	Fett	Grease	1
F85004-1	Ringgaffelnøgle 27 mm	Ring gabelschlüssel 27 mm	Ring crescent wrench 27 mm	1
F85007	Unbrako nøgle sæt	Innensechskantschlüssel Satz	Allen key set	1
F85027	Nøgle til luftmotor UAG50	Schlüssel für Luftmotor UAG50	Wrench for Air Motor, UAG50	1
F85029	Indsats	Einlage	Insert	1
F85030	Værktøjskasse	Werkzeugkiste	Toolbox	1
DCHY 29306	Pneumatik olie	Pneumatik olie	Pneumatic oil	1 ltr.





DC nr.				QTY
DK5025-16	Carbide skærehoved 50 x 25 mm	Hartmetall Fräser 50 x 25 mm	Carbide cutting head 50 x 25 mm	10
DKA1019	Diamant hoved 46 X 47 mm	Diamantfräsköpfe 46 x 47 mm	Diamond head 46 x 47mm	1
DD70M8A	Diamant hoved Diam. 70 mm, Axial	Diamantfräsköpfe 70 mm, Axial	Diamond head 70 mm, Axial	1
DD75M8	Diamant hoved Diam. 75 mm	Diamantfräsköpfe 75 mm	Diamond head 75 mm	1
DD9024	Bolt til DD9025	Bolzen für DD9025	Bolt for DD9025	1
DD9025	Skæreskive 70 x 10mm	Trennschleifscheibe 70 x 10 mm	Cutting disc 70 x10 mm	1
080570	Luftmotor AG100	Luft Motor AG100	Air motor AG100	1
080574	Luftmotor UG65	Luft Motor UG65	Air motor UG65	1
050717	Forlænger kabel 6 M	Verlängerungskabel 6 M	Extension cable 6M	1
F85019	Nøgle til luftmotor AG100	Schlüsse für Luft Motor AG100	Key for Air motor G38	1
F85026	Nøgle til luftmotor UG65	Schlüsse für Luft Motor UG65	Key for Air motor UG65	1